

émaalco[®]
ENAMELWARE

YOUR COMPANY NAME

ENAMEL QUICK OFFER COFFEE POT - DIELINE

All pictures and visualisations shown in this file are for illustration purpose only.
Actual product may slightly vary due to complicated enameling process.



INSTRUCTION

1. The design should be prepared in Quick Offer Design Colors palette. Remember to use **max. 6 colors**.
2. Prepare graphics as **vectors** and typography as **curves**.
3. Fit your graphics in the "printable area".
4. Graphics **inside** the dish can be **only black and white**.
5. Avoid gradient and transparency.
6. The minimum detail size is **0,2 mm**, so all elements and free spaces must be at least **0,4 mm** thick.
7. The same color chosen for different parts of the dish might not be identical in the final product.

**ENAMEL
COLORS**

OUTSIDE



INSIDE



RIM

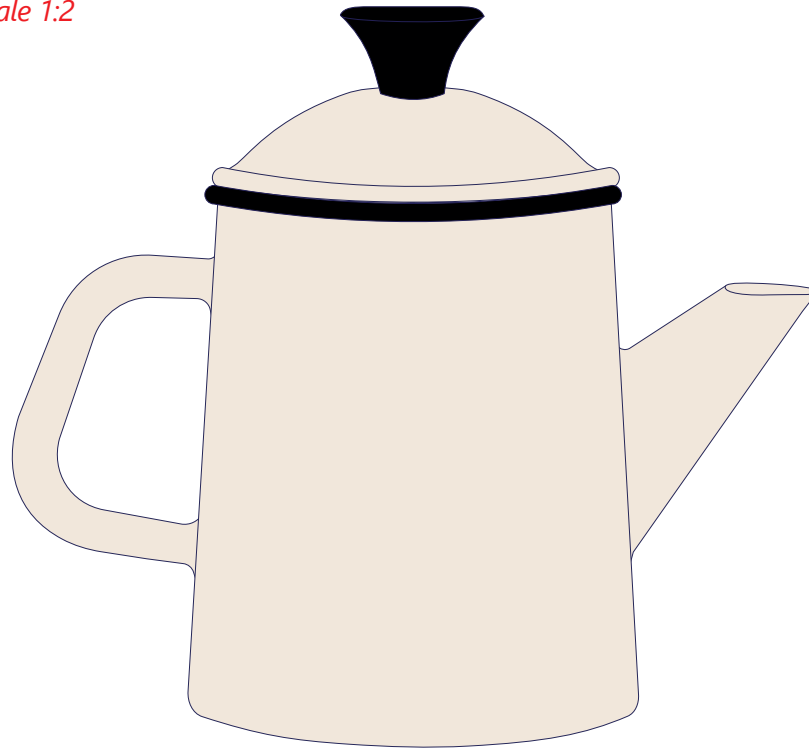


DIMENSIONS

height	205 mm	8,1 inch
diameter	120 mm	4,7 inch
capacity	1400 ml	47 oz
weight	0,64 kg	1,41 lb

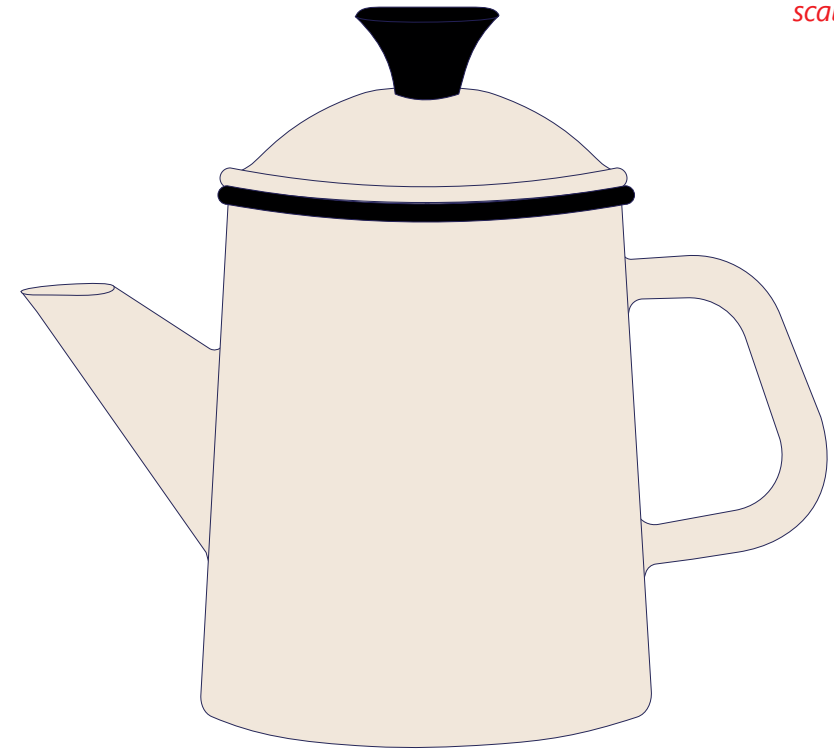
SIDE A

scale 1:2



SIDE B

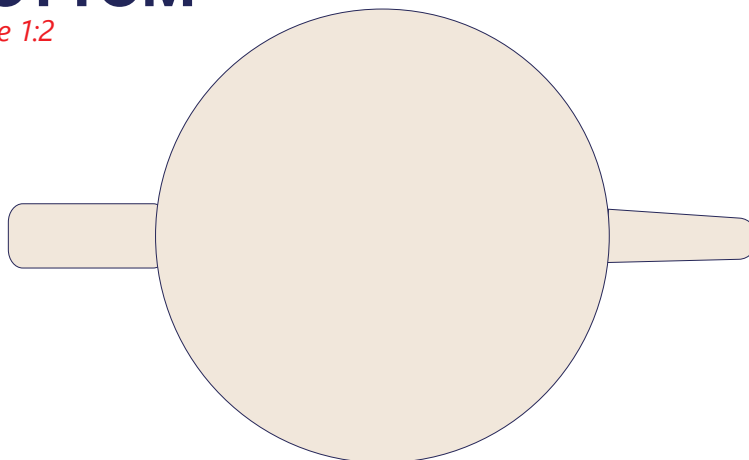
scale 1:2



BOTTOM

scale 1:2

SIDE A ↓

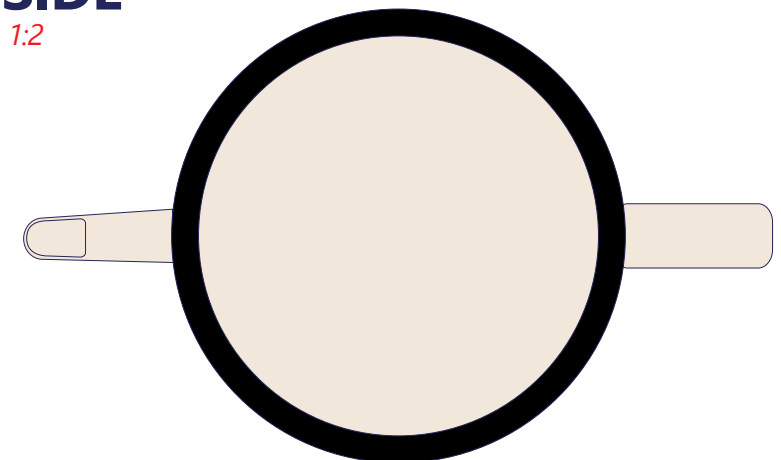


SIDE B ↑

INSIDE

scale 1:2

SIDE B ↓



SIDE A ↑

ARTWORK COLORS



white



white



white



white



white



white

SIDE A

ARTWORK

scale 1:1

SIDE B

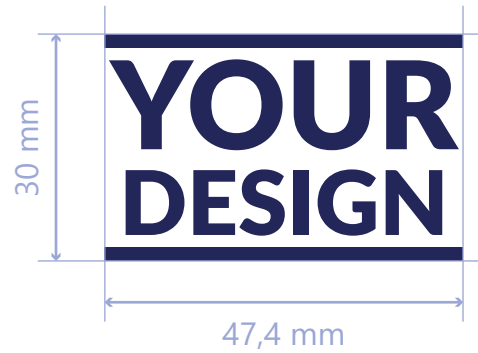
ARTWORK

scale 1:1

BOTTOM

ARTWORK

scale 1:1

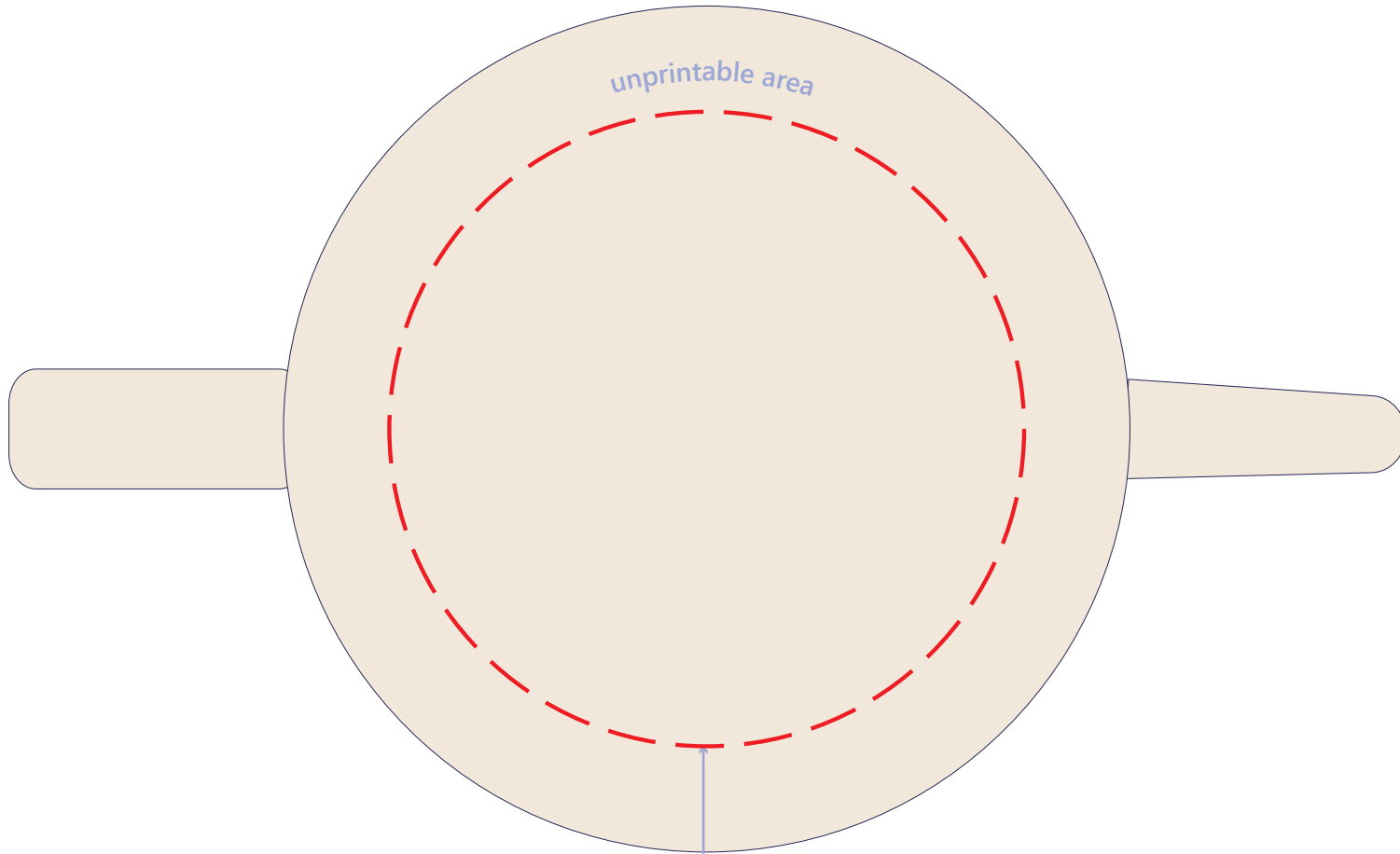


BOTTOM

ARTWORK

scale 1:1

Ø 90 mm | Ø 3.5 in



This is the printable area and it doesn't cover the surface of the coffee pot completely

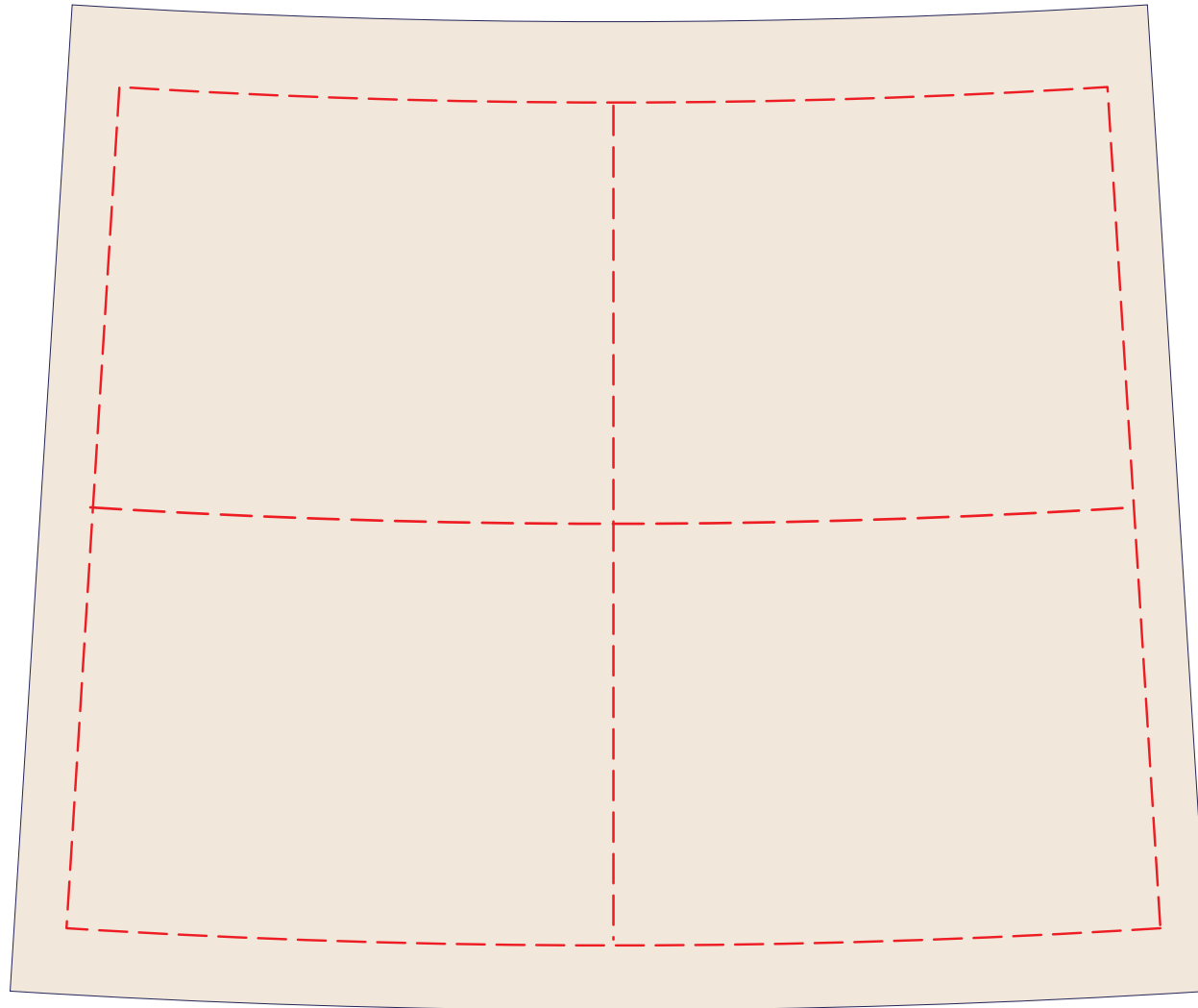
SIDE A

ARTWORK

scale 1:1

136x116 mm | 5.4x4.6 in

your design must fit into the below area



← HANDLE

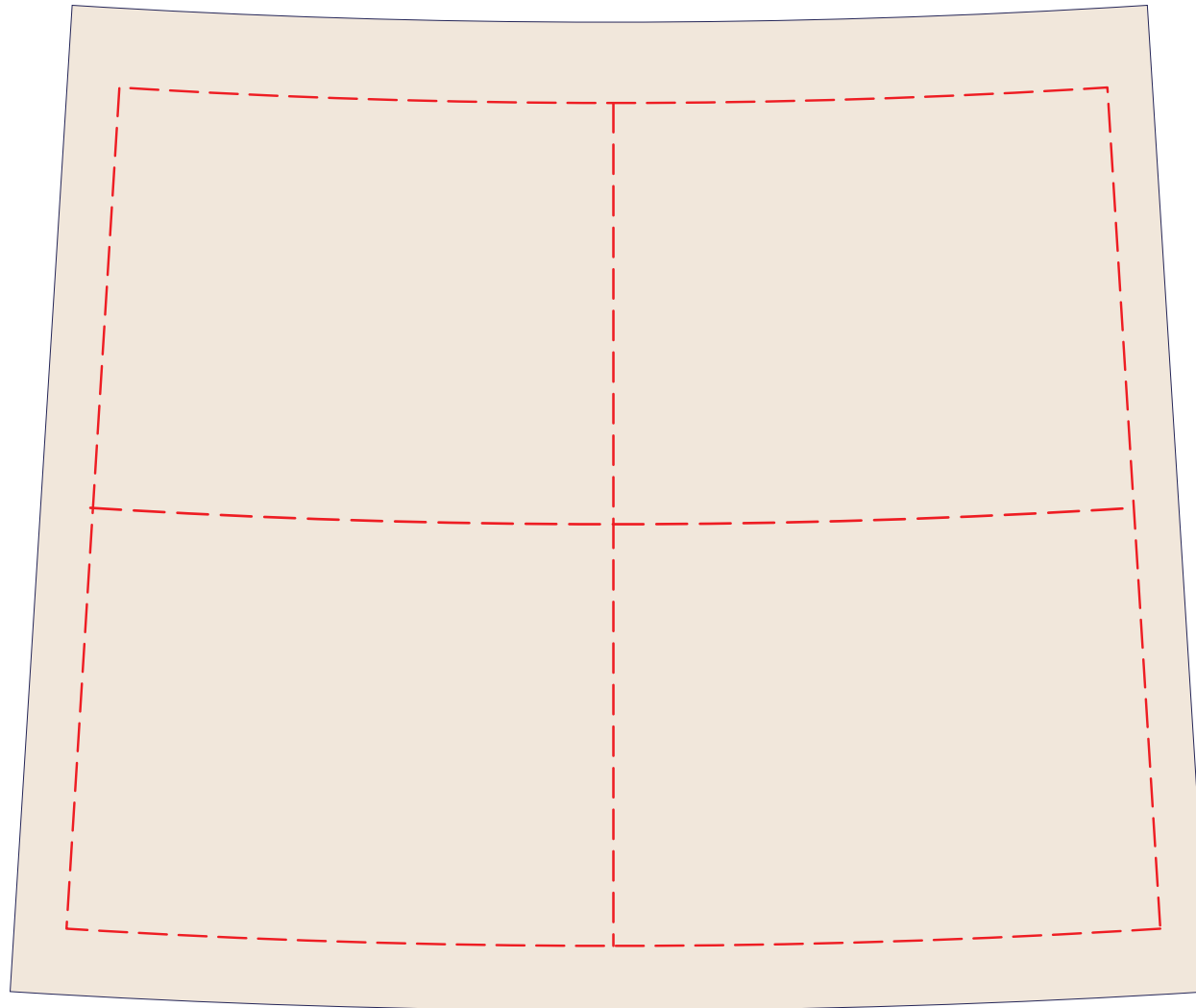
↑
This is the printable area and it doesn't cover
the surface of the coffee pot completely

SIDE B ARTWORK

scale 1:1

136x116 mm | 5.4x4.6 in

your design must fit into the below area



HANDLE →

↑
This is the printable area and it doesn't cover
the surface of the coffee pot completely