

émaalco[®]
ENAMELWARE

YOUR COMPANY NAME

QUICK OFFER PLATE 24 CM

All pictures and visualisations shown in this file are for illustration purpose only.
Actual product may slightly vary due to complicated enameling process.



INSTRUCTION

1. The design should be prepared in Quick Offer Design Colors palette. Remember to use **max. 6 colors**.
2. Prepare graphics as **vectors** and typography as **curves**.
3. Fit your graphics in the "printable area".
4. Graphics **inside** the dish can be **only black and white**.
5. Avoid gradient and transparency.
6. The minimum detail size is **0,2 mm**, so all elements and free spaces must be at least **0,4 mm** thick.
7. The same color chosen for different parts of the dish might not be identical in the final product.

**YOUR
COMPANY
NAME**

**ENAMEL
COLORS**

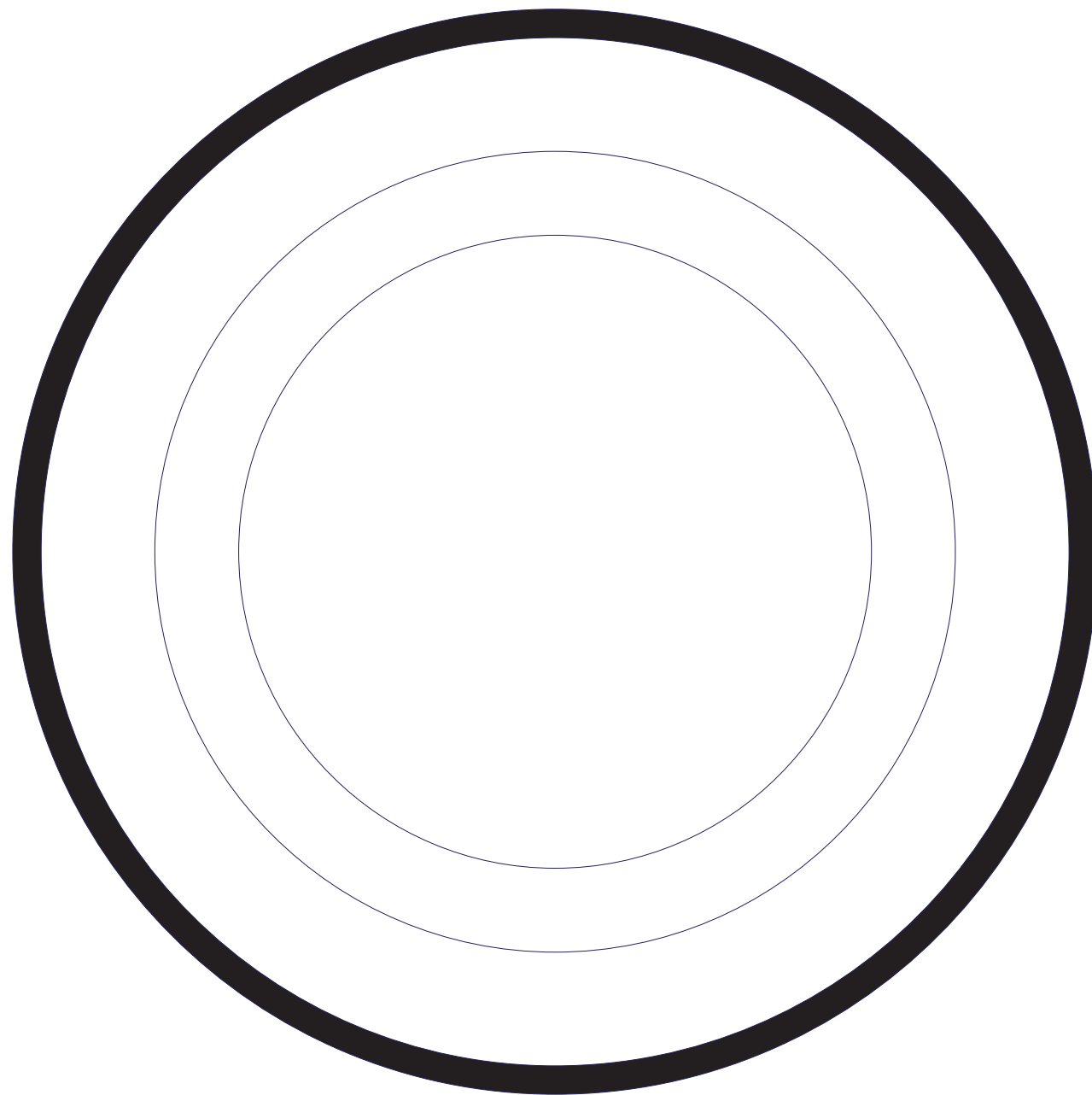
OUTSIDE



INSIDE



RIM



DIMENSIONS

diameter 240 mm 9,5 inch
weight 0,34 kg 0,75 lb



BOTTOM

scale 1:0.7

YOUR
COMPANY
NAME

ENAMEL COLORS

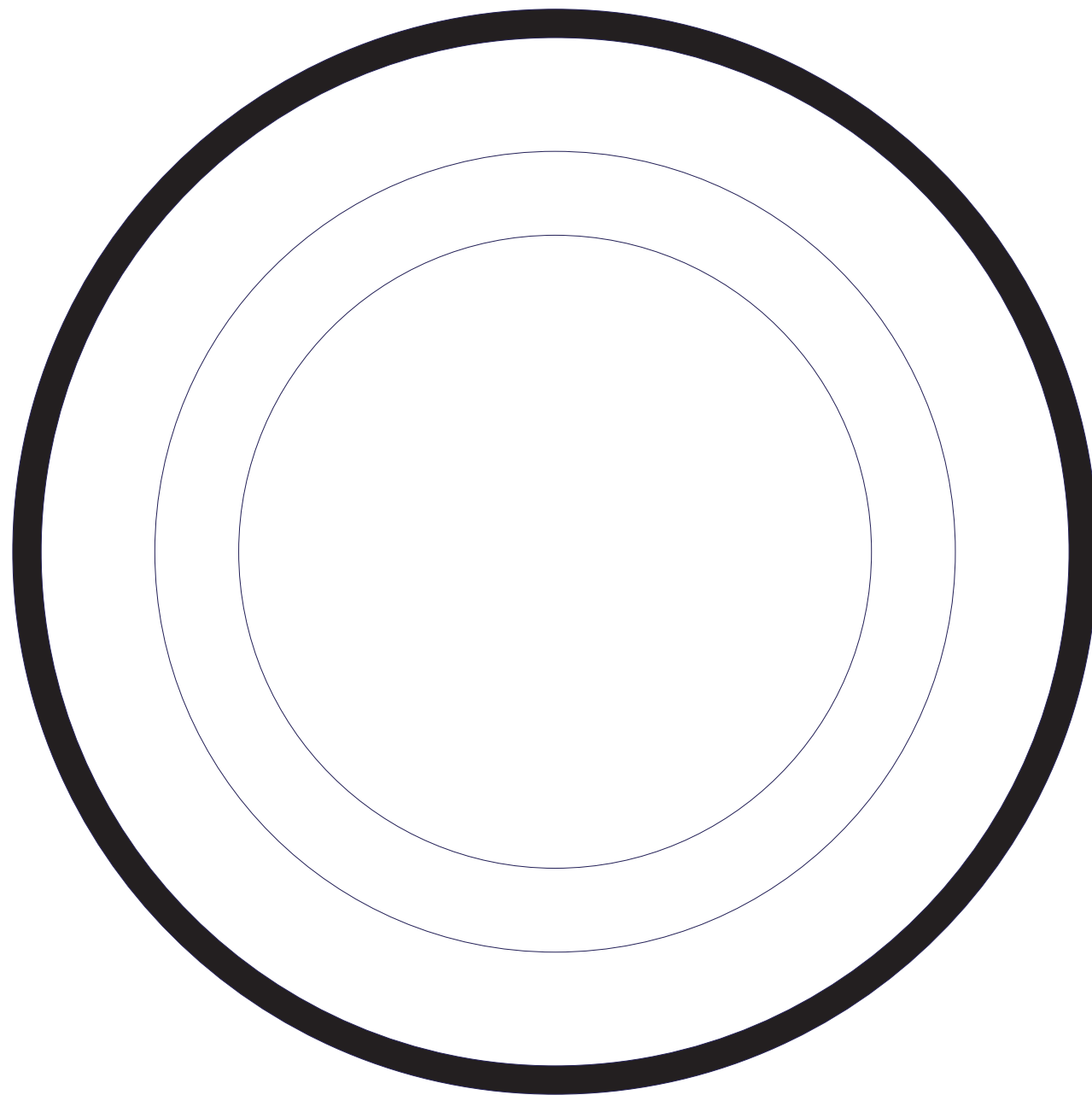
OUTSIDE



INSIDE



RIM

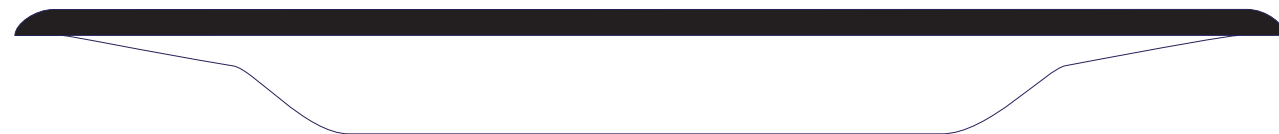


DIMENSIONS

diameter	240 mm	9,5 inch
weight	0,34 kg	0,75 lb

SIDE B

scale 1:0.7



24 CM QUICK
OFFER PLATE

ARTWORK COLORS



white



white



white



white



white



white

BOTTOM

ARTWORK

scale 1:1

INSIDE

ARTWORK

scale 1:1

UPPER RIM

ARTWORK

scale 1:1

LOWER RIM

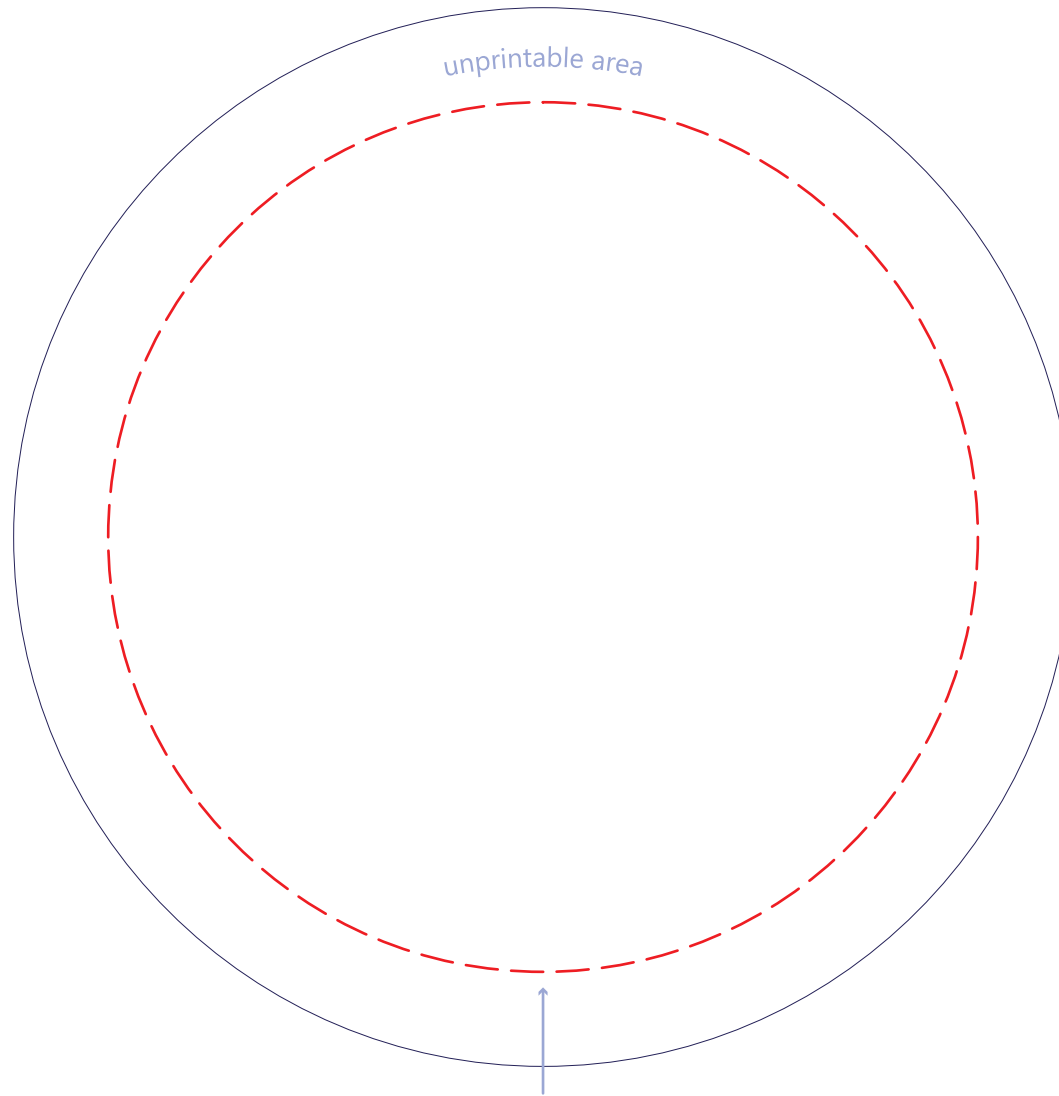
ARTWORK

scale 1:1

**INSIDE
ARTWORK**

scale 1:1

Ø 115 mm | Ø 4.5 in

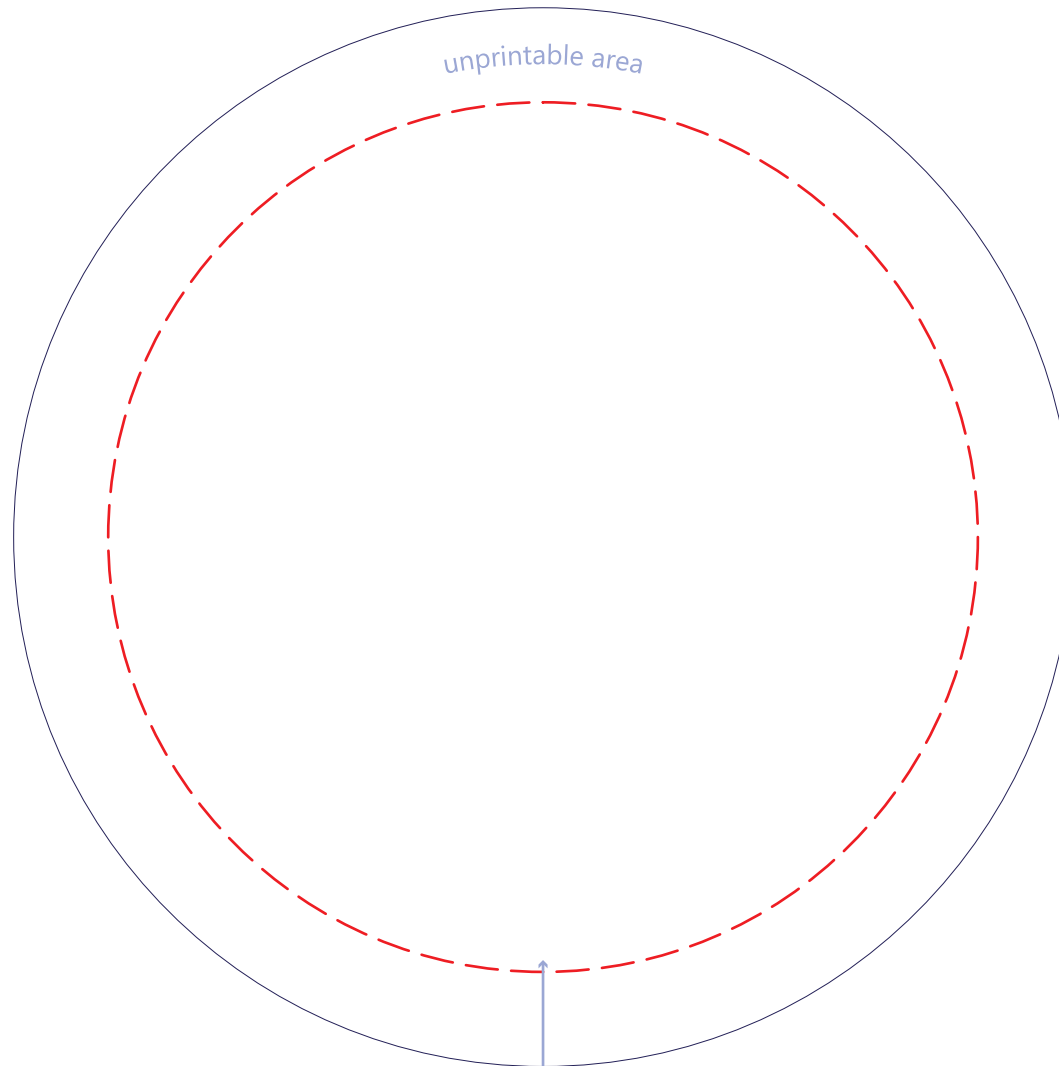


This is the printable area and it doesn't cover the surface of the plate completely

BOTTOM ARTWORK

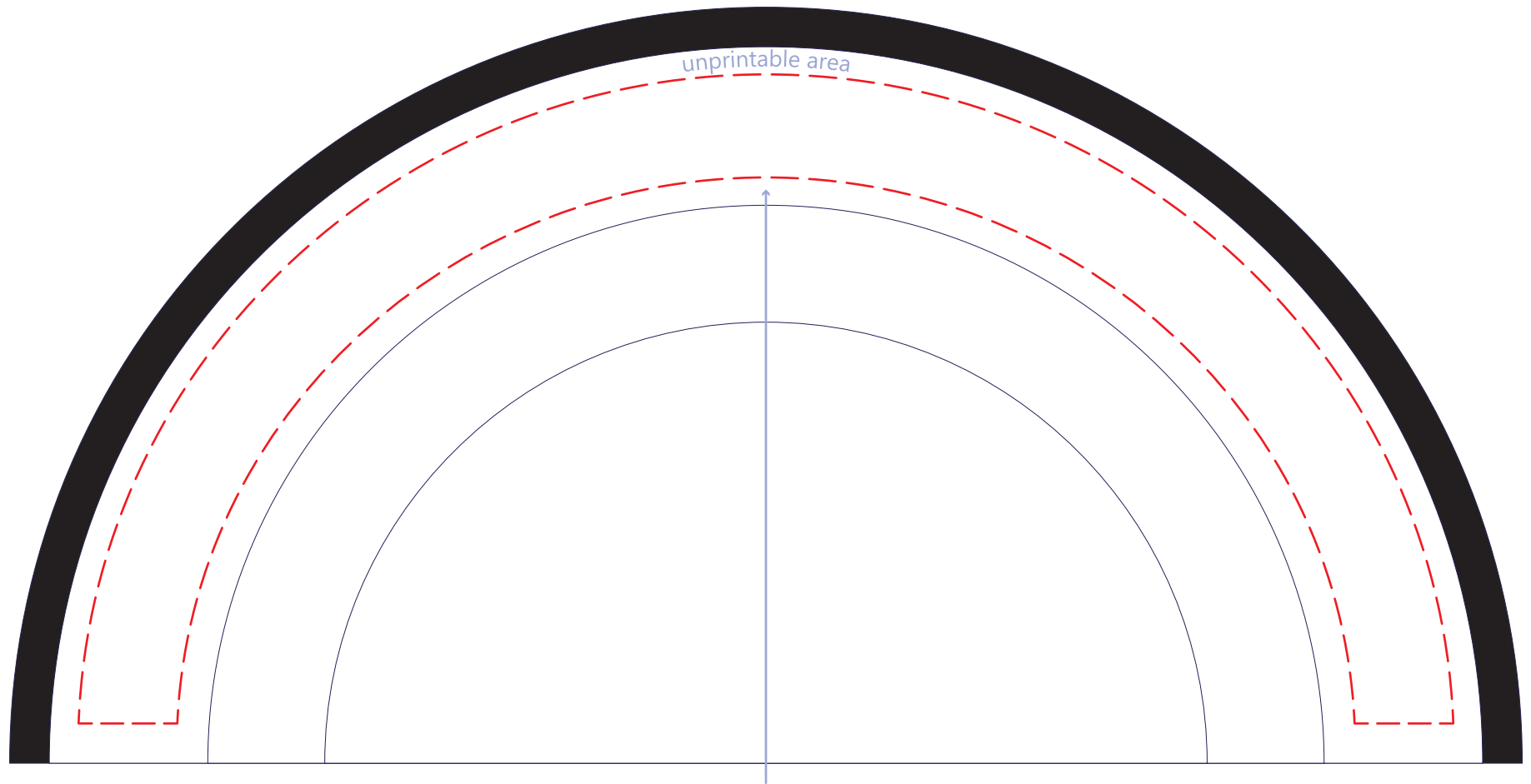
scale 1:1

Ø 115 mm | Ø 4.5 in



This is the printable area and it doesn't cover the surface of the plate completely

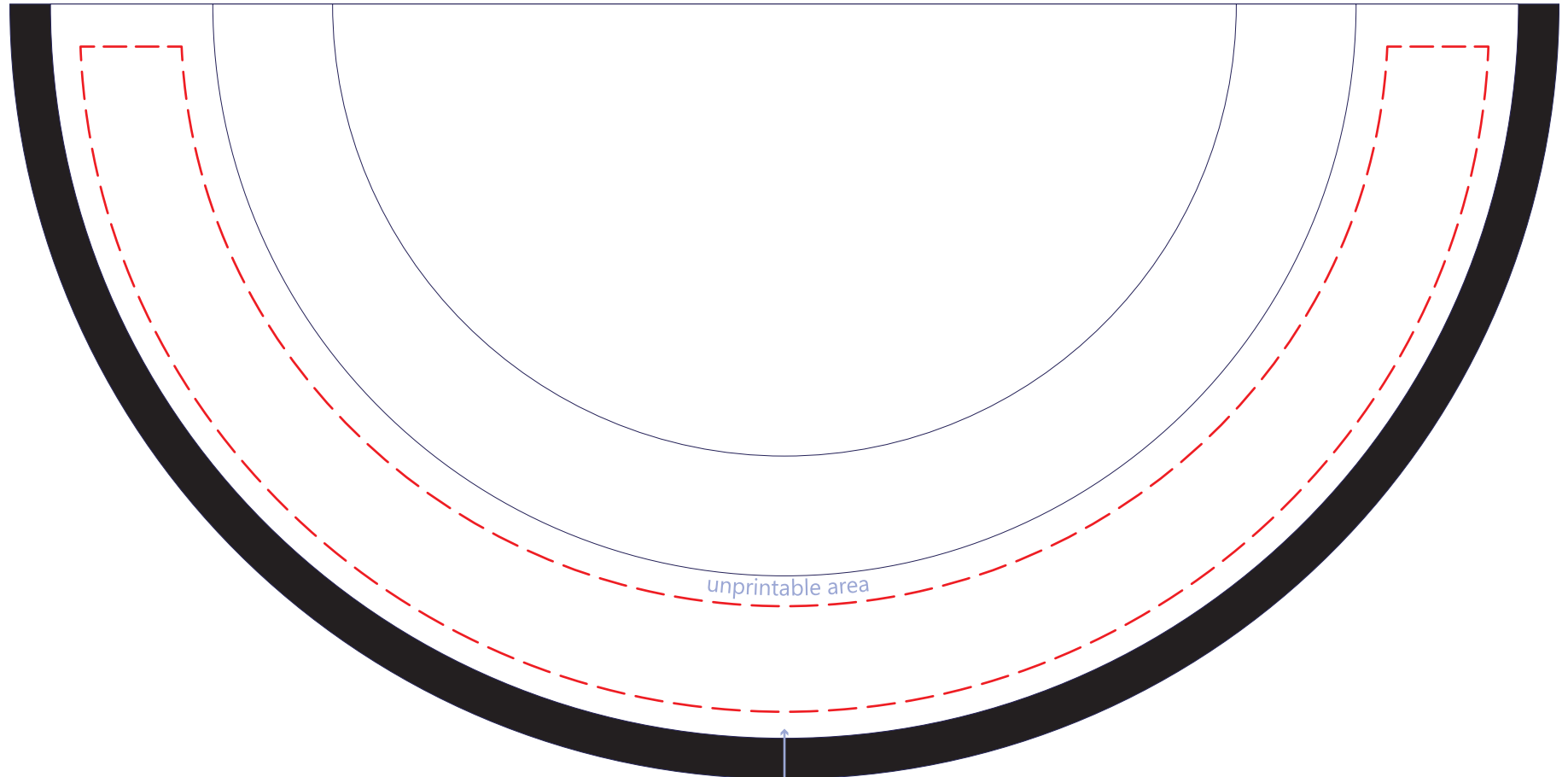
UPPER RIM
ARTWORK
scale 1:1



This is the printable area and it doesn't cover the surface of the plate completely

LOWER RIM

ARTWORK
scale 1:1



This is the printable area and it doesn't cover the surface of the plate completely