

**émaalco<sup>®</sup>**  
**ENAMELWARE**

**YOUR COMPANY NAME**

---

**ENAMEL QUICK OFFER TALL TUMBLER - DIELINE**

All pictures and visualisations shown in this file are for illustration purpose only.  
Actual product may slightly vary due to complicated enameling process.



## INSTRUCTION

1. The design should be prepared in Quick Offer Design Colors palette. Remember to use **max. 6 colors**.
2. Prepare graphics as **vectors** and typography as **curves**.
3. Fit your graphics in the "printable area".
4. Graphics **inside** the dish can be **only black and white**.
5. Avoid gradient and transparency.
6. The minimum detail size is **0,2 mm**, so all elements and free spaces must be at least **0,4 mm** thick.
7. The same color chosen for different parts of the dish might not be identical in the final product.

**YOUR  
COMPANY  
NAME**

## ENAMEL COLORS

### OUTSIDE



### INSIDE



### RIM



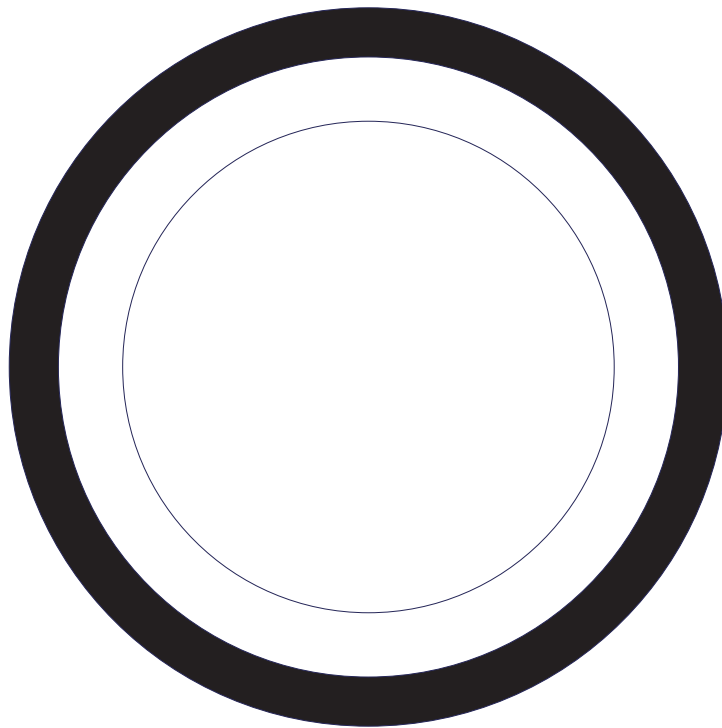
## DIMENSIONS

height	130 mm	5.1 inch
diameter	80 mm	3.1 inch
capacity	500 ml	16.9 oz
weight	0,22 kg	0.49 lb

**QUICK OFFER TALL TUMBLER**

## INSIDE

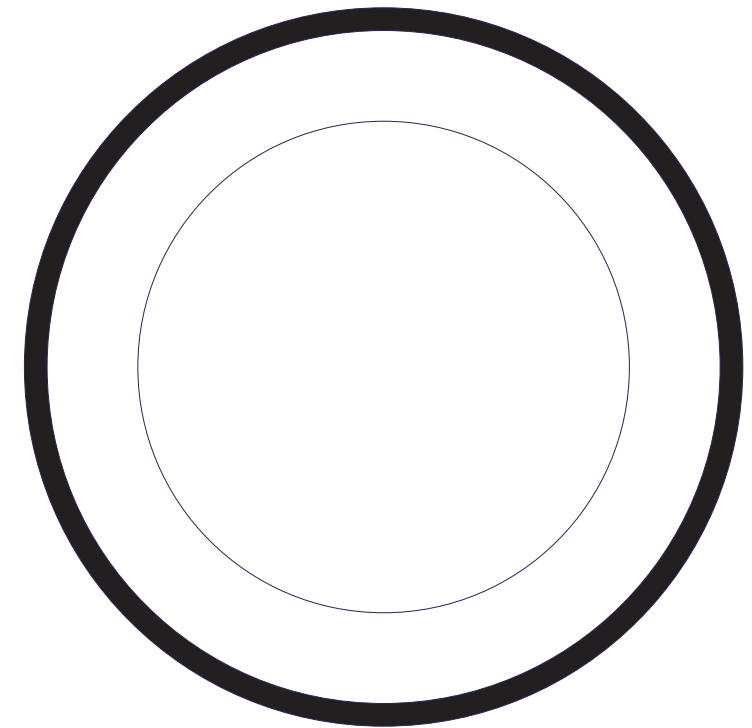
*scale 1:1*



## BOTTOM

*scale 1:1*

**SIDE A**



**SIDE B**

**YOUR  
COMPANY  
NAME**

**ENAMEL  
COLORS**

OUTSIDE



INSIDE

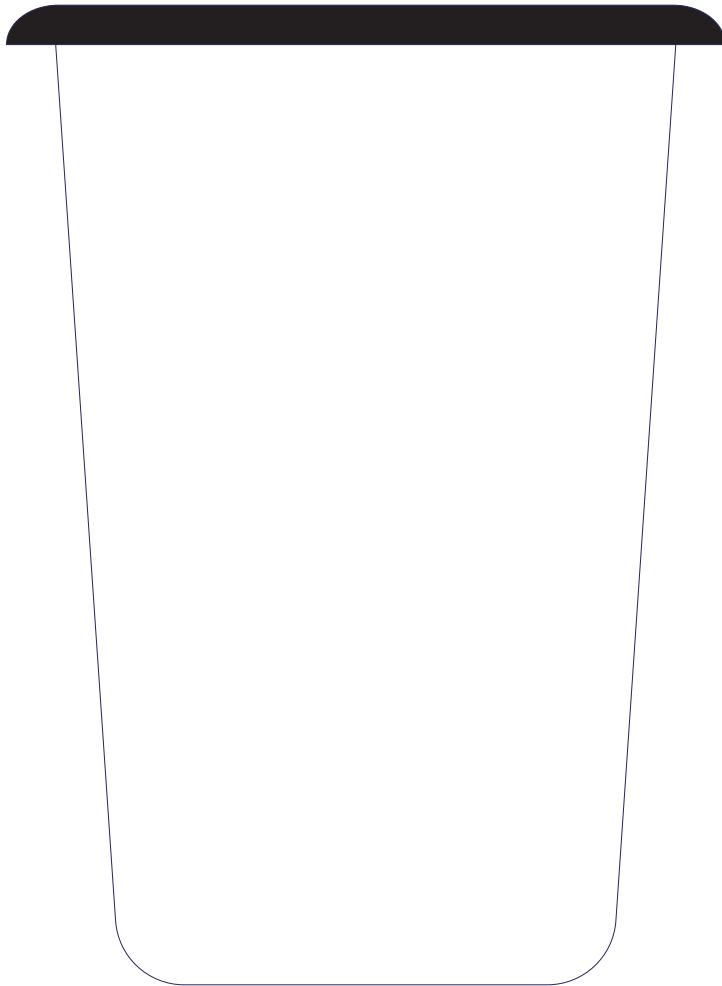


RIM



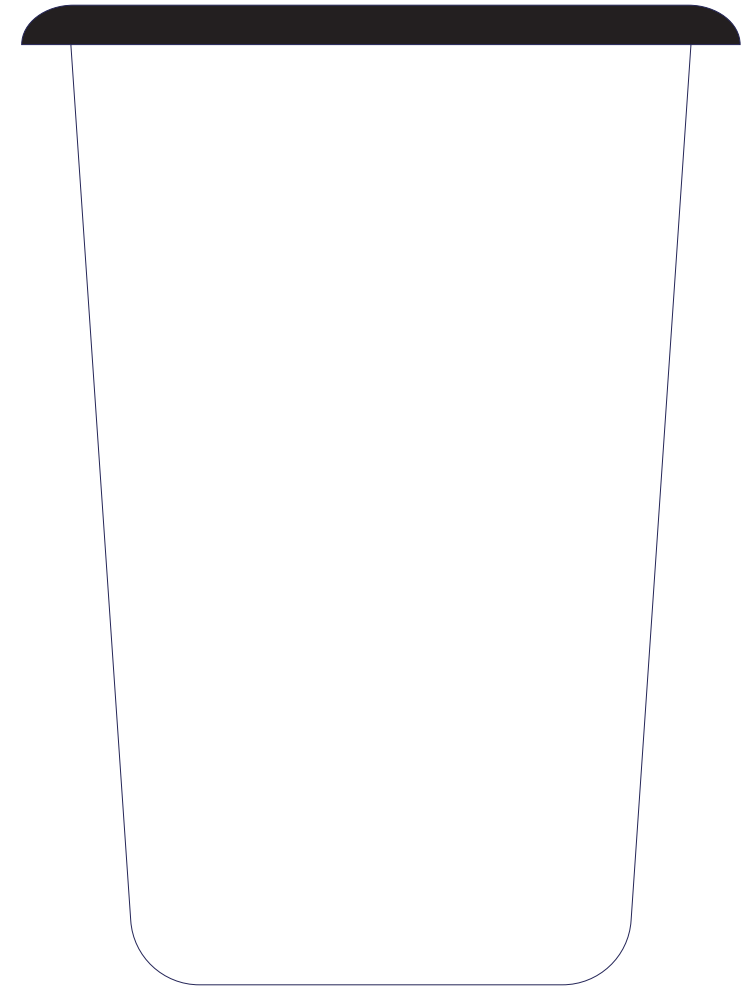
**SIDE A**

*scale 1:1*



**SIDE B**

*scale 1:1*



ARTWORK COLORS



white



white



white



white



white



white

**SIDE A**

ARTWORK

*scale 1:1*

**SIDE B**

ARTWORK

*scale 1:1*

**BOTTOM**

ARTWORK

*scale 1:1*

**WRAP-AROUND**

ARTWORK

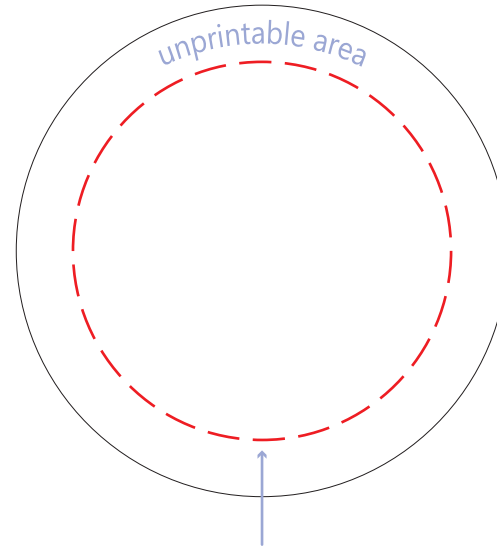
*scale 1:1*

# BOTTOM

## ARTWORK

scale 1:1

Ø 50 mm | Ø 1.9 in



This is the printable area and it doesn't cover the surface of the mug completely

# SIDE A ARTWORK

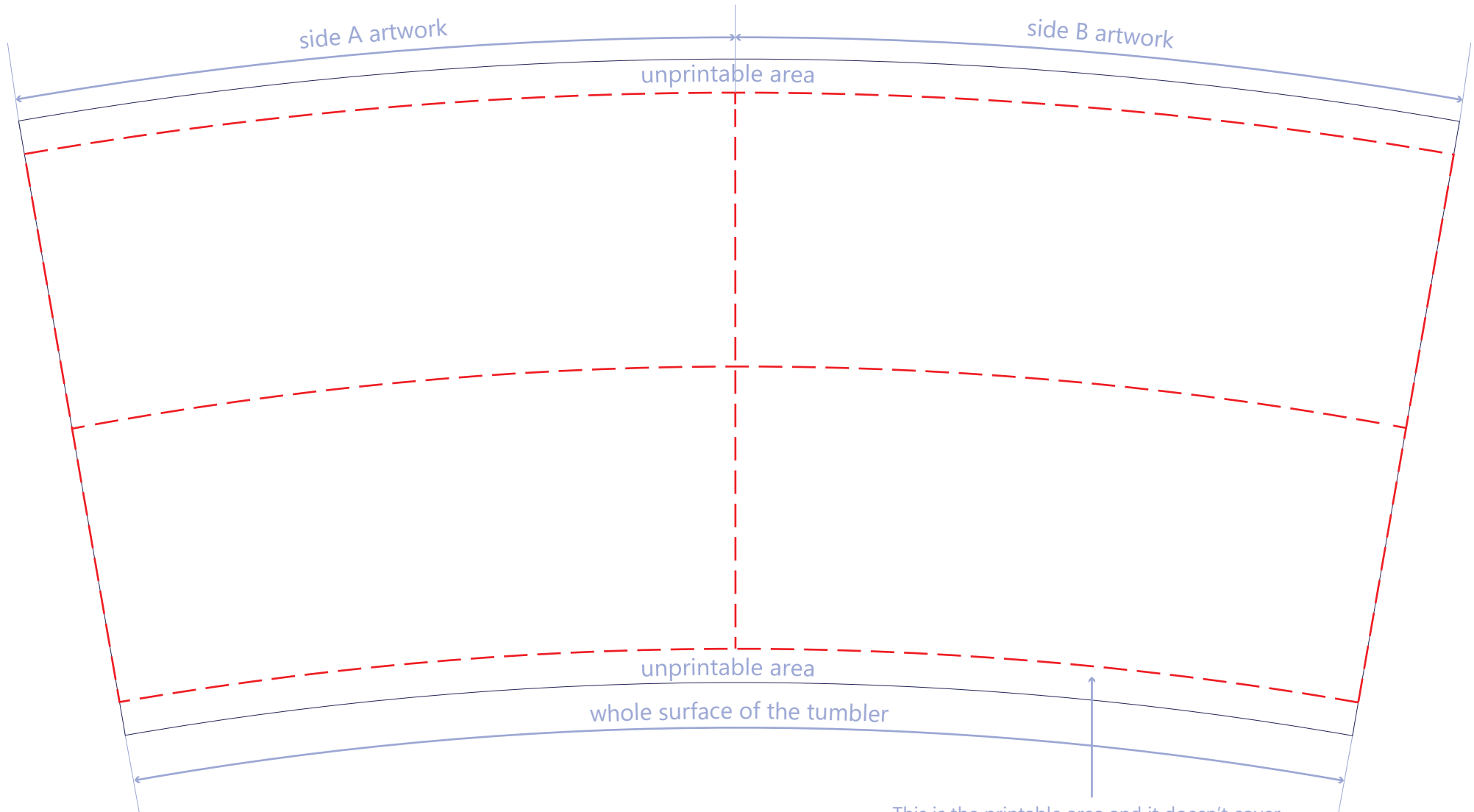
scale 1:1

110x100 mm | 4.3x3.9 in

# SIDE B ARTWORK

scale 1:1

110x100 mm | 4.3x3.9 in



This is the printable area and it doesn't cover the surface of the tumbler completely



**emalco<sup>®</sup>**

**ENAMELWARE**

**YOUR COMPANY NAME**

ENAMEL TALL TUMBLER